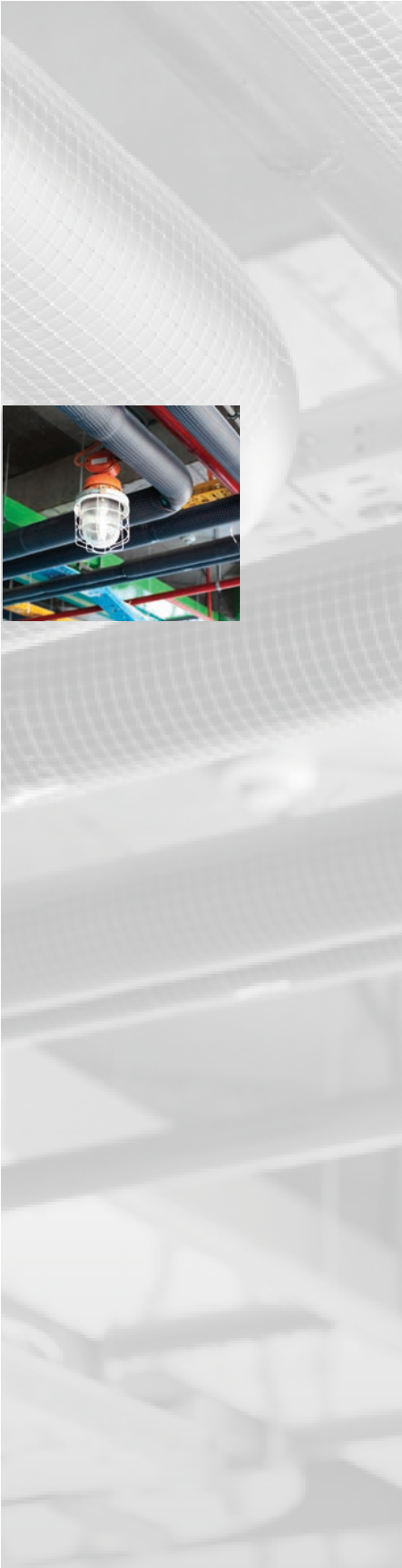


Flow Instrumentation Product Overview



**Flow measurement and control
you can count on.**



About Us



Flow measurement and control you can count on.

Badger Meter Flow Instrumentation understands that companies cannot manage what they cannot measure—and leverages more than a century of flow measurement expertise and a technology-rich portfolio to optimize customer applications worldwide.

An industry leader in both mechanical and electrical flow metering technologies, Badger Meter offers one of the broadest flow control and measurement portfolios in the industry—a portfolio that includes eight out of the ten major flow meter technologies.

Simply put, Badger Meter Flow Instrumentation provides technology to measure and control whatever moves through a pipe or pipeline – including water, air, steam, oil, other liquids and gases. And we apply our expertise to further enhance our products' ease-of-use, accuracy and effectiveness.

Customers can rely on Badger Meter Flow Instrumentation for application-specific solutions that deliver accurate, timely and dependable flow data and control essential for product quality, cost control, safer operations, and regulatory compliance.

- Accurate
- Reliable
- Easy to use

Flow Instrumentation Solutions

Badger Meter provides solutions for a variety of unique flow measurement and control challenges, serving a wide array of industries. Use this chart as a first step in matching our flow technologies with your application.

| | Electromagnetic Meters | Impeller Meters | Disc Meters | Turbine Meters | Oscillating Piston Meters | Oval Gear Meters | Control Valves | Ultrasonic Meters | Vortex Meters | Variable Area Meters | Differential Pressure Meters | Hydraulic Diagnostic Products |
|----------------------------------|------------------------|-----------------|-------------|----------------|---------------------------|------------------|----------------|-------------------|---------------|----------------------|------------------------------|-------------------------------|
| Drinking Water | ✓ | ✓ | ✓ | ✓ | | | ✓ | ✓ | ✓ | | | |
| Waste Water | ✓ | ✓ | | | | | ✓ | ✓ | | | ✓ | |
| Irrigation | ✓ | ✓ | | ✓ | | | | ✓ | ✓ | | | |
| Process Water/ Semiconductor | ✓ | ✓ | ✓ | ✓ | | | ✓ | ✓ | ✓ | ✓ | ✓ | |
| Chemicals | ✓ | ✓ | ✓ | ✓ | ✓ | ✓ | ✓ | ✓ | ✓ | ✓ | ✓ | |
| Food | ✓ | | ✓ | ✓ | ✓ | | ✓ | ✓ | | | | |
| Oil/Automotive Fluids | | ✓ | ✓ | ✓ | ✓ | ✓ | ✓ | ✓ | | ✓ | | |
| Petrol | | ✓ | ✓ | ✓ | | ✓ | ✓ | ✓ | | ✓ | | |
| Pharmaceutical/ Biotechnology | ✓ | ✓ | | | ✓ | | ✓ | ✓ | ✓ | | ✓ | |
| HVAC | ✓ | ✓ | ✓ | ✓ | ✓ | | | ✓ | ✓ | | ✓ | |
| Industrial | ✓ | ✓ | ✓ | ✓ | ✓ | ✓ | ✓ | ✓ | ✓ | ✓ | ✓ | ✓ |
| Concrete Batching | ✓ | ✓ | ✓ | | | | | | | | | |
| Test & Measurement | | | | ✓ | | | ✓ | | | ✓ | ✓ | ✓ |
| Oil & Gas | | | | ✓ | | | ✓ | ✓ | | | ✓ | |
| Petrochem | | | | ✓ | | | ✓ | | ✓ | | ✓ | |
| Mining | | | | ✓ | | | ✓ | ✓ | | ✓ | | ✓ |
| Machine Tools | | | | ✓ | | | | ✓ | | ✓ | | ✓ |
| Power Generation | ✓ | | | | | | | ✓ | | | ✓ | |
| Aerospace | | | | ✓ | | | ✓ | | | ✓ | | ✓ |
| Hydraulic/Fluid Power | | | | ✓ | | | | ✓ | | ✓ | | ✓ |

Our Portfolio

| Technology/Product | Page |
|--|------|
| Mechanical Flow Meters | |
| Turbine Meters | |
| Blancett® ----- | 6 |
| Vision ----- | 7 |
| Cox ----- | 8 |
| Industrial & Recordall® ----- | 9 |
| Oval Gear Meters | |
| Industrial Oval Gear ----- | 10 |
| Nutating Disc Meters | |
| Recordall® Disc Meters ----- | 11 |
| Variable Area Meters | |
| Hedland® ----- | 12 |
| Hydraulic Diagnostic Products | |
| Flo-tech® ----- | 13 |
| Impeller Meters | |
| Impeller ----- | 14 |
| Differential Pressure Meters | |
| Preso® ----- | 15 |
| Electronic Flow Meters | |
| Electromagnetic Meters | |
| M-Series® ----- | 16 |
| Ultrasonic Meters | |
| Dynasonics® ----- | 17 |
| Vortex Meters | |
| Vortex ----- | 18 |
| Control Valves | |
| Research Control® Valves & Positioners ----- | 19 |
| Connectivity and Communications ----- | 20 |
| Calibration Services ----- | 21 |



Blancett® Turbine Flow Meters

Blancett turbine flow meters feature durable stainless steel designs that are well-suited for applications with high corrosive, temperature or pressure environments.

Flow monitors and transmitters:

- Digital display of flow rate and total with selectable unit of measure
- Mounting options: meter, remote, swivel, panel, and explosion-proof
- Loop, battery and solar-powered options
- Communications options for Modbus RTU

Liquid measurement turbine flow meters:

- Pipe size: 1/2...10 in. (13...254 mm)
- Threaded, flange, wafer, and sanitary (3-A) connections
- Operating pressure: up to 5000 psig (344 barg)
- Operating temperature: up to 450° F (232° C)
- Flow range: 0.6...5000 gpm (11.36...18,927 lpm)
- Accuracy: up to $\pm 1\%$ of reading

Gas turbine flow meters:

- Pipe size: 2 in. (51 mm)
- Wafer mounting provides quick installation and requires minimal space
- Operating pressure: up to 2200 psig (15.3 MPa)
- Operating temperature: up to 330° F (165° C)
- Flow range: 7...350 acfm (12...595 m³/hr)
- Accuracy: up to $\pm 2\%$ of reading



- Upstream oil & gas
- Food & beverage
- Semiconductor
- Petrochemical



Vision Turbine Flow Meters

The Vision turbine is the smallest flow meter from Badger Meter. The meters are designed for flow measurement of low-viscosity and non-aggressive liquids, including demineralized water, alkaline solutions, oils, salad oil, fuel consumption, beverages, water solutions, and coolants. Plus, Vision turbine meters comply with NSF standards and the lead-free provision of the Safe Water Drinking Act.

Turbine meters:

- Pipe sizes: 1/2...5/8 in. (13...16 mm)
- Flow range: 0.026...9.2 gpm (0.1...35 lpm)
- Accuracy: up to $\pm 3\%$ of reading
- Operating pressure: up to 363 psig (25 barg)
- Operating temperature: $-4...100^{\circ}\text{F}$ ($-20...212^{\circ}\text{C}$)
- Mountable in any orientation
- Bi-directional flow measurement
- Frequency output



- Appliances
- Hospitality
- Food & beverage
- Medical
- Chemical
- Pharmaceutical
- Cooling systems
- Automotive



Cox Precision Turbine Flow Meters

Cox turbine meters provide highly accurate liquid measurement in a compact package. Designed to measure clean fluids, Cox turbine meters use ceramic ball bearings to virtually eliminate friction, providing highly accurate and repeatable measurements, and are available in both single rotor and patented dual rotor configurations. Cox flow monitors and transmitters feature several design configurations while some use Strouhal-Roshko computations to improve flow meter accuracy by compensating for thermal effects on the meter bore diameter. Custom packaging is available upon factory consultation.

Exact dual rotor meters:

- Pipe size: 1/4...4 in. (6.35...101.6 mm)
- Flow range: 0.25...1500 gpm (0.095...5678 lpm)
- Linearity: $\pm 0.1\%$ of reading, with a flow processor
- Absolute accuracy: $\pm 0.10\%$ of reading
- Repeatability: $\pm 0.02\%$ of reading

Precision single rotor meters:

- Pipe size: 1/4...2 in. (6.35...50.8 mm)
- Flow range: 0.05...310 gpm (0.19...1173.5 lpm)
- Repeatability: $\pm 0.02\%$ of reading
- Linearity: $\pm 0.50\%$ ($\pm 0.1\%$ with flow processor)
- Frequency output: 1200...1500 Hz
- Response time: 2...3 ms (at 1.2 cSt)

Precision gas meters:

- Pipe size: 1/4...2 in. (6.35...50.8 mm)
- Flow range: 0.40...250 acfm (0.07...424.75 m³/hr)
- Repeatability: $\pm 0.25\%$ of reading
- Response time: 20...30 ms, or better (at 1.2 cSt)

Precision LoFlo turbine flow meters:

- Pipe size: 3/8 in. (9.5 mm)
- Flow range: 0.006...1.25 gpm (0.024...4.73 lpm)
- Repeatability: $\pm 0.25\%$ of reading
- Response time: 20...30 ms, or better (at 1.2 cSt)

- Chemical batching
- Fuel measurement & custody transfer
- High-pressure hydraulic fluid measurement
- Test & measurement
- Aerospace



Industrial & Recordall® Turbine Flow Meters

Industrial Turbo Meters

Industrial Turbo meters are ideally suited for the toughest flow conditions where continuous service and minimal maintenance are required. They are available in various materials and pressure ratings and can be combined with a large selection of Badger Meter accessories to suit numerous applications.

Specifications:

- Pipe size: 2...6 in. (50.8...152.4 mm)
- Flow range: 8...2000 gpm (3.8...7570 lpm)
- Operating pressure: up to 300 psi
- Accuracy: $\pm 1.5\%$
- Repeatability: $\pm 0.25\%$
- Temperature range: $-30...250^{\circ}\text{F}$ ($-34.4...121.1^{\circ}\text{C}$)



Recordall Turbo Series Meters

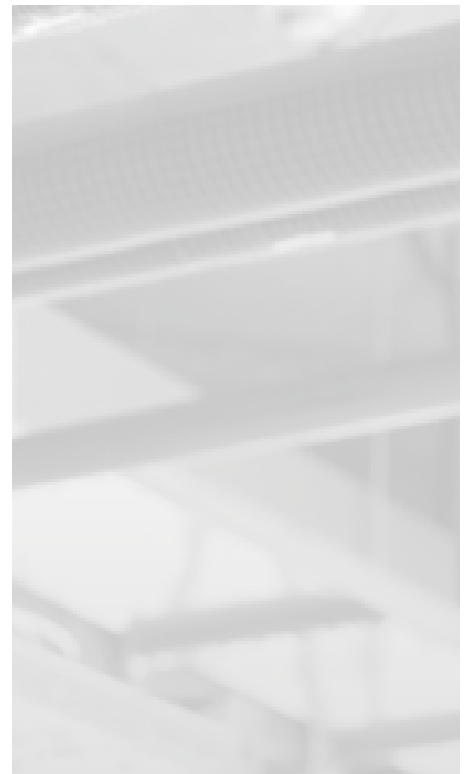
Recordall Turbo Series meters are ideally suited for any water application, performing with great accuracy over a wide flow range. They also have very low pressure loss, increasing system efficiency.

Specifications:

- Pipe size: 1.5...20 in. (DN 40...500)
- Flow range: 4...19,800 gpm (100% at $\pm 1.5\%$)
- Operating pressure: up to 150 psi
- Accuracy: $\pm 1.5\%$
- Repeatability: $\pm 0.25\%$
- Operating temperature: up to 120°F (49°C)



- Water & wastewater
- HVAC
- Process water
- Low viscosity fluids



Industrial Oval Gear (IOG) Flow Meters

Badger Meter IOG flow meters provide an effective solution for optimizing process operations—even in very low-flow environments—enabling users to match the meter size to their application for utmost accuracy. The meters deliver precise flow measurements to eliminate waste, and thanks to low pressure drop, have minimal impact on system energy requirements to move liquids.

Displays, transmitters and registers:

- Meter-mount, local display registers with choice of no output, scalable pulse output, quadrature/dual pulse output, or 4...20 mA output
- Meter-mount, non-scaled transmitters with either a single-reed switch or dual-reed switch
- Meter or remote-mount large display options include models with choice of 4...20mA output, Modbus RTU or BACnet MSTP
- Some models are explosion-proof rated

Oval gear meters:

- Pipe size: 1/4 ...3 in. (6...76 mm)
- Flow range: 0.07...185 gpm (0.26...700 lpm)
- High accuracy and repeatability
- Operating pressure: up to 740 psi
- Liquid viscosity: 5...1000 cP
- Construction: choice of aluminum or 316L stainless steel
- Mountable in any orientation



- Chemical
- Petrochemical
- Oil & gas
- Pulp & paper
- Paints & coatings
- Printing



Recordall® Nutating Disc Flow Meters

Recordall (RCDL) positive displacement meters are one of the most cost-effective methods in metering industrial fluids. The RCDL meter has a simple, efficient design for high accuracy and repeatability over the entire meter flow range.

Features:

- Wide flow range
- Rugged bronze or thermoplastic housing
- Models 25 and 70—Bronze: 250° F (121° C) option
- Easily maintained without removing from line
- Durable components for minimal maintenance
- Wide range of compatible accessories

Performance:

- Accuracy: $\pm 1.5\%$
- Repeatability: $\pm 0.5\%$
- Maximum operating pressure: 150 psi
- Maximum operating temperature:
 - Plastic housing: 100° F (37.78° C)
 - Bronze housing: 120° F (48.89° C)



- Cold & hot water
- Alcohols
- HVAC
- Condensate return
- Boiler feed
- Additive dispensing
- Fuel consumption



Hedland® Variable Area Flow Meters

The Hedland family of products features over 15,000 inline variable area flow meters for oil, phosphate esters, water, water-based liquids, and compressed gases. Capable of operating in any position, Hedland meters are easy to read and built for use in rugged environments.

Variable area flow meters with visual indicator:

- Pipe size: 1/4...3 in. (6.35...76.2 mm)
- Accuracy: up to $\pm 2\%$ of full scale
- Operating pressure: up to 6000 psig (414 barg)
- Operating temperature: up to 500° F (260° C)
- Also available: $\pm 5\%$ full scale accuracy model from 1/2...2 in. (12.7...50.8 mm) for systems with lower operating pressure and temperature ratings

Variable area flow meters with outputs and digital display:

- Pipe size: 1/4...1.5 in. (6.35...38.1 mm)
- Accuracy: up to $\pm 2\%$ of full scale
- Operating pressure: up to 6000 psig (414 barg)
- Operating temperature: up to 240° F (116° C)
- Analog outputs: 4...20 mA, 0...5V DC or 0...10V DC
- Digital display of flow rate and total
- Programmable keypad offers selectable engineering units and in-field linearization



- Fluid power
- Machine tool cooling & lubrication
- Product packaging
- Semiconductor
- Die casting & plastic injection molding
- Mining
- Automotive
- Aerospace



Flo-tech® Hydraulic Diagnostic Products

Flo-tech products are used extensively in hydraulic testing and analysis. Capable of simultaneous flow, pressure and temperature measurement, typical product applications include:

- Flow measurement
- Test stands with flow, pressure and temperature sensors
- On-site diagnostics and troubleshooting

USB-powered hydraulic system analyzer:

- Captures pressure spikes up to 10,000 psi (0.2 ms response time)
- Logs up to 12 hours and exports data to Microsoft Excel® and other spreadsheet programs
- High and low set point alarms

Handheld hydraulic analyzer:

- Hydraulic horsepower calculation
- 2.5 MB data logging storage
- Automatic Sensor Detection
- Five sensor inputs: turbine meter, two pressure sensors, temperature sensor, and rpm speed sensor

Inline hydraulic turbine flow sensors:

- Flow range: up to 350 gpm (1324 lpm)
- Accuracy: $\pm 1\%$ of full scale
- Operating pressure: up to 6000 psig (414 barg)
- Operating temperature: up to 300° F (149° C)
- Frequency pulse, 4...20 mA and voltage outputs



- Agriculture
- Automotive
- Construction
- Forestry
- Marine
- Mining



Data Industrial® Impeller Flow Meters

The Data Industrial impeller flow meters feature a six-blade or a symmetrical four-blade paddle-wheel design with a patented sensing mechanism. Unlike other mechanical metering technologies, impellers can tolerate bursts of air and vibration that would often damage other meters. Impeller solutions are extensible with network and data acquisition options.

Inline Flow Meters:

- Pipe size: 1/2...4 in. (12.7 to 101.6 mm)
- Accuracy: up to $\pm 2\%$ of full scale
- Features available:
 - ◆ Built-in energy meter
 - ◆ Construction for use in super clean water
 - ◆ Design for below-grade usage
 - ◆ Point-to-point wireless

Insertion Flow Meters:

- One size meter fits a range of pipe diameters
- Available options include:
 - ◆ Hot insertion sensors
 - ◆ Battery-powered insertion sensors
 - ◆ Bi-directional sensors



- Irrigation
- Chemical
- Water & wastewater
- HVAC/Energy monitoring
- Concrete & ready mix



Preso® Differential Pressure Flow Meters

Preso differential pressure flow meters are precision-engineered to offer exceptional turndown ratios and superior accuracy. Designed to accommodate any manufacturer's pressure transducer, the Preso family offers a complete line of primary flow elements including Pitot tubes, venturi meters and wedge meters.

Ellipse® Pitot tube flow meters:

- Innovative elliptical design offers 17:1 turndown ratios and very low pressure loss
- For liquids, gases or steam
- Pipe size: 2...120 in. (50.8...3048 mm)
- Accuracy: $\pm 0.75\%$ of reading

COIN® wedge flow meters:

- Fluid viscosity: up to 3000 cP
- Reynolds Number: as low as 300
- Calibrated accuracy: $\pm 0.5\%$ of reading
- Low pressure losses
- Maintenance free (no moving parts)
- Suitable for abrasive slurries, viscous or dirty fluids such as bitumen or coal tar
- Pipe size: 1/2...48 in. (13...1219 mm)
- Custom designs available

Venturi flow meters and inserts:

- Three designs for optimal combination of accuracy, repeatability and cost
- Maintenance free (no moving parts)
- Pipe size: 1/2...60 in. (13...1524 mm)
- Calibrated accuracy: up to $\pm 0.25\%$ of reading
- Maximum pressure loss: 6% of DP
- Custom designs available



- Oil & gas
- Chemical
- Petrochemical
- Municipal water & wastewater
- HVAC systems



M-Series® Electromagnetic Flow Meters

Whether it's improving accuracy, decreasing system maintenance or meeting the demands of challenging liquid conditions, Badger Meter electromagnetic meters deliver the performance and precision your critical flow measurement applications require.

- Non-intrusive, completely open flow tube design
- Pipe size: 1/4...54 in. (6.35...76.2 mm), depending upon model
- Accuracy: up to $\pm 0.25\%$
- Corrosion-resistant liners for long life
- Remote or meter mounted amplifier
- LCD display
- SCADA-ready outputs
- NEMA 4X/6P options
- NSF approved

Models available include:

- M1000 for basic general area environments or on-truck applications
- M2000 for general area environments
- M3000 for Class 1, Div. 2 environments
- M4000 for Class 1, Div. 1 environments
- M5000 battery powered for locations without power
- 7500P for basic batching applications



- Water & wastewater
- Well water
- Reclaimed water
- Bi-directional flow
- Chemical
- Pharmaceutical
- Food & beverage
- Concrete production
- Irrigation



Dynasonics® Ultrasonic Flow Meters

Dynasonics ultrasonic flow meters are ideal for liquid flow measurement as a permanently installed meter, a temporarily installed meter, or as a portable flow verification device. The clamp-on design for closed pipes is non-intrusive and offers fast installation and setup—no need to cut into or drain piping. Some models also offer energy metering and network connectivity.

Portable transit time/Doppler hybrid ultrasonic flow meters:

- Pipe size: 1/2 in. (12 mm) and larger
- Accuracy: $\pm 1\%$ of reading
- Measures flow and energy
- Full-color display, graphing capabilities, advanced touch-screen interface, and wizard-based configuration tools
- 1 GB internal data logging
- Optional dual-mode pipe wall thickness sensor

Transit time ultrasonic flow meters:

- Pipe size: 1/2 in. (12 mm) and larger
- Accuracy: $\pm 1\%$ of reading
- Variety of output options: 4...20 mA, frequency pulse, control relay, and data logging
- Options include BACnet MSTP, Modbus RTU, EtherNet/IP, Modbus TCP/IP, BACnet/IP, and energy monitoring

Doppler ultrasonic flow meters:

- Pipe size: 1/4 in. (6 mm) and larger
- Accuracy: up to $\pm 1\%$ of full scale
- Fluid velocity: up to 30 feet (9 meters) per second

Fusion® hybrid ultrasonic flow meters:

- Pipe size: 1/2 in. (12.75 mm), 1 in. (25.4 mm) and 2 in. (50.8 mm)
- Accuracy: $\pm 1\%$
- Rugged, all metal construction ensures a long service life in harsh outdoor environments
- Modbus RTU, 4...20 mA and frequency pulse outputs
- Water flow meter optimized for coal bed methane wells

- Water & wastewater
- HVAC/Energy monitoring
- Power generation
- Mining
- Semiconductor
- Food & beverage
- Flow system commissioning & troubleshooting



Vortex Flow Meters

Vortex flow meters are ideal for accurately measuring liquids and gases. Vortex meters have no moving parts and are virtually maintenance-free once installed. Meters are available in wafer, insertion, inline, and flange designs.

Liquid measurement:

- Accuracy: up to $\pm 1\%$ of reading
- Repeatability: up to $\pm 0.25\%$ of actual flow
- Operating pressure: up to 400 psig (27.5 barg)
- Operating temperature: up to 300° F (149° C)
- Available material options include PVC, PVDF, CPVC and polypropylene

Gas measurement:

- Accuracy: up to $\pm 1\%$ of reading
- Turndown ratio: up to 70:1
- Operating pressure: $-5\dots250$ psig ($-0.34\dots17$ barg)
- Operating temperature: up to 360° F (182° C)
- Digital flow transmitter with HART® Communication Protocol



- Chemical
- Petrochemical
- Semiconductor
- Bio-gas
- Natural gas
- Water & wastewater
- Irrigation
- HVAC



Research Control® Valves & Positioners

Badger Meter manufactures and markets a complete range of precision control valves and accessories to meet the most critical and demanding applications.

Small control valves:

- RCV, 9000 and 9100 control valves
- Pipe size: 1/4...2 in.
- CV: 0.0000018...70.0
- Multiple trim sizes per valve size
- Precise accurate control
- Operating temperature: -450...1800° F (-267.78...982.22° C)
- Operating pressures: full vacuum to 60,000 psi
- Materials: 316 SST, Hastelloy, Monel, Inconel, Tantalum, and other exotics

Actuators:

- Air-to-open
- Air-to-close
- Integral top-mounted positioners
- Electronic actuators
- Stainless steel option available on most models

Positioners:

- Compatible with most pneumatically-actuated valves
- Easily mounts to all linear and rotary actuators
- Reduces effects of on-line valve friction
- NAMUR NE107-based solution
- Fugitive emissions monitoring
- 4...20 mA, HART®, FOUNDATION™ fieldbus H1 or Profibus® PA communications
- Easy two-step commissioning
- Auto-start with self-calibration
- IP66, NEMA 4X and XP enclosures
- SIL3 certification



- Gas & liquid
- Chemical
- Petrochemical
- Bio-tech
- Food & beverage



Connectivity and Communications Add-Ons

Displays and Calculations

- Batch controllers
- Displays
- Energy calculators



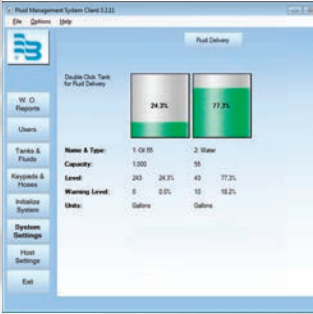
Network Adapters

- Modbus RTU
- BACnet MSTP
- LonWorks
- Metasys
- Wireless mesh
- Point-to-point wireless



Data Management

- Data acquisition
- Fluid management
- Inventory management



Flow Dynamics® Services

Flow Dynamics is a major, independent primary standard flow calibration laboratory, supplying both manufacturers and end users with unparalleled calibration results.

What we provide:

- Calibration and repair of most types of flow meters
- Multiple viscosity liquid calibrations using Strouhal-Roshko analysis
- Calibration history files for future comparisons
- Research and development testing for flow measurement devices
- Variety of inert gas calibrations
- Correlation and extrapolation methods simulating hazardous fluids
- Electronic calibrations for flow computers and signal conditioners
- OEM production calibration service
- NIST-traceable calibrations



Quick Calibration Service:

Seven day turns or less for single viscosity calibrations, without expedite fees. On-site and field calibration services available.



FM 7857
AS9100 Rev. C and
ISO 9001:2008



- Calibration for most types
- OEM production calibrations
- NIST-traceable primary standards
- NVLAP (Code 200668-0) accredited*



*NVLAP accreditation applies only to the Badger Meter Flow Dynamics calibration Lab, located in Scottsdale AZ.



- Product quality
- Control costs
- Regulatory Compliance
- Maintain safety

Rely on Badger Meter Flow Instrumentation

Today's industries face accelerating demands to contain costs, reduce product variability – and meet ever-changing safety and regulatory requirements. To address these challenges, they must reap more value from every component in their systems. This system-wide scrutiny has heightened the focus on flow instrumentation in industrial process, manufacturing, commercial fluid, building automation, and precision engineering applications where flow measurement and control are critical.

Customers can rely on Badger Meter Flow Instrumentation for application-specific solutions that deliver accurate, timely and dependable flow data and control essential for product quality, cost control, safer operations, and regulatory compliance.



Control. Manage. Optimize.

Trademarks appearing in this document are the property of their respective entities. Due to continuous research, product improvements and enhancements, Badger Meter reserves the right to change product or system specifications without notice, except to the extent an outstanding contractual obligation exists. © 2014 Badger Meter, Inc. All rights reserved.

www.badgermeter.com

The Americas | Badger Meter | 4545 West Brown Deer Rd | PO Box 245036 | Milwaukee, WI 53224-9536 | 800-876-3837 | 414-355-0400
México | Badger Meter de las Americas, S.A. de C.V. | Pedro Luis Ogazón N°32 | Esq. Angelina N°24 | Colonia Guadalupe Inn | CP 01050 | México, DF | México | +52-55-5662-0882
Europe, Middle East and Africa | Badger Meter Europa GmbH | Nurtinger Str 76 | 72639 Neuffen | Germany | +49-7025-9208-0
Europe, Middle East Branch Office | Badger Meter Europe | PO Box 341442 | Dubai Silicon Oasis, Head Quarter Building, Wing C, Office #C209 | Dubai / UAE | +971-4-371 2503
Czech Republic | Badger Meter Czech Republic s.r.o. | Mařikova 2082/26 | 621 00 Brno, Czech Republic | +420-5-41420411
Slovakia | Badger Meter Slovakia s.r.o. | Raclianska 109/B | 831 02 Bratislava, Slovakia | +421-2-44 63 83 01
Asia Pacific | Badger Meter | 80 Marine Parade Rd | 21-04 Parkway Parade | Singapore 449269 | +65-63464836
China | Badger Meter | 7-1202 | 99 Hangzhong Road | Minhang District | Shanghai | China 201101 | +86-21-5763 5412